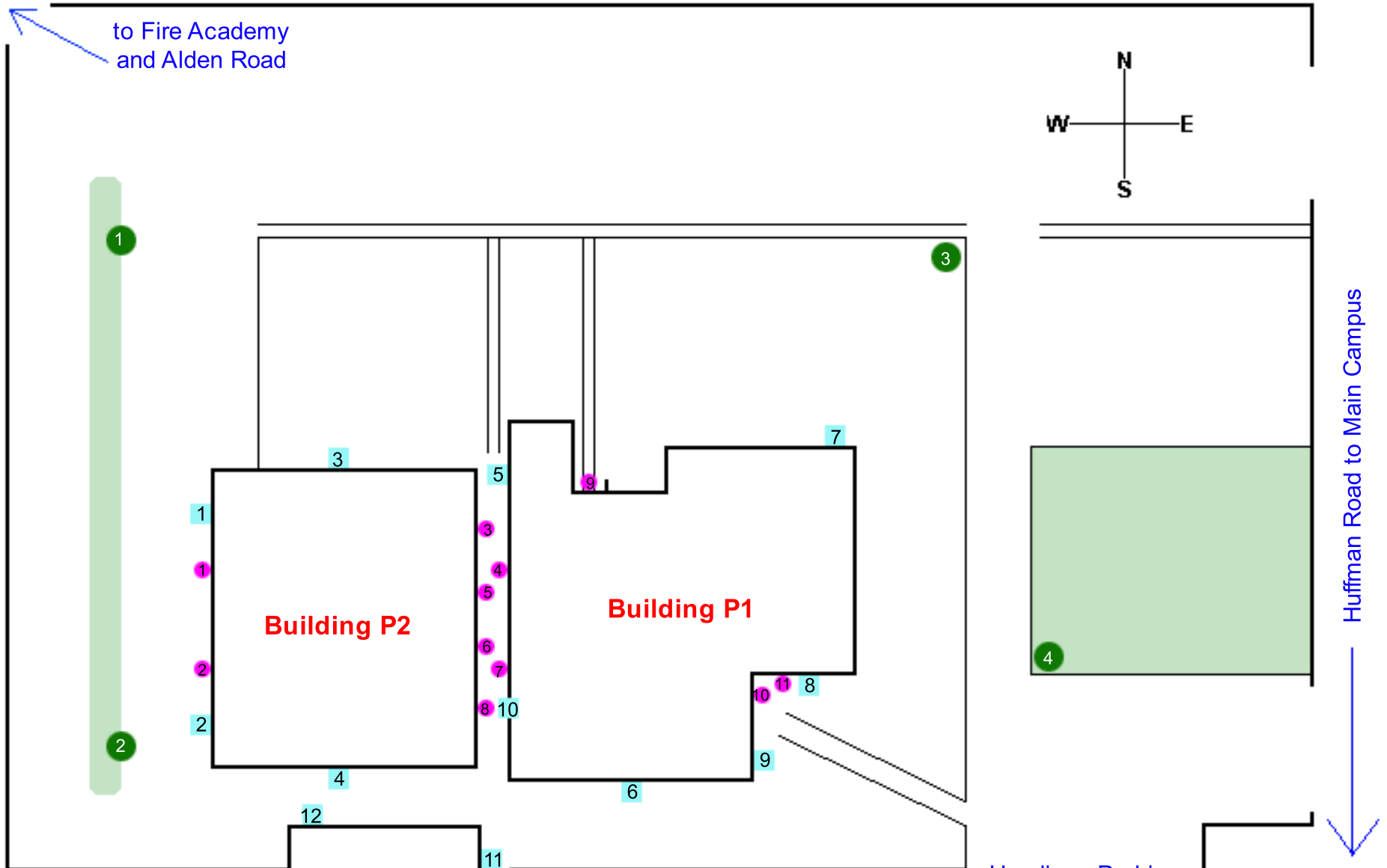


Huffman Road Facility Exterior Lighting Layout

Updated: October 19, 2006



Legend

- = Street Poles
- = Ceiling Fixtures
- = Wall Packs

- * All fixtures are 120V.
- * All wall packs are 175W HID except those noted.
- * All fixtures controlled by a time clock, except those noted.
- * Wall Pack #7 is a 400W HPS controlled by a self enclosed photocell.
- * Wall Pack #9 is a standard twin household incandescent par fixture.
- * Wall Packs #11, 12 is a standard household porch incandescent light.

- * All Ceiling Fixtures are 100W HID, except those noted.
- * Ceiling Fixtures #1, 2, 4, 7, 10 and 11 are incandescent controlled by switches inside the doors.
- * Ceiling Fixture #9 is controlled by a self enclosed photocell and switch inside the doors.
- * Street Poles are 250W HID.
- * Ceiling Fixtures # 5, 6 are incandescent.